



S P A T I A L L A B S TM

SpatialLabsTM Stereoscopic 3D Solutions

SPATIALLABS EXPERIENCE CENTER PRO

ASPIRE 3D 15
ACER SPATIALLABS VIEW PRO
ACER SPATIALLABS VIEW PRO 27

PRODUCT

SPATIALLABS EXPERIENCE CENTER

PREDATOR HELIOS 3D 15 SPATIALLABS EDITION
PREDATOR SPATIALLABS 27


SPATIALLABS MODEL VIEWER

PRO WITH SKETCHFAB AND DATASMITH INTEGRATION

LITE

SPATIALLABS ADD-ONS FOR MODEL VIEWER

SPATIALLABS UNREAL PLUG-IN

SPATIALLABS UNITY PLUG-IN

ACER OPEN XR RUNTIME

ACER STEAM VR BRIDGE

SPATIALLABS TRUEGAME

SPATIALLABS GO

SPATIALLABS PLAYER

DEVELOPER SITE & DEVELOPER SUPPORT




SpatialLabs Go

SpatialLabs Go

SpatialLabs Go is a proprietary solution for rendering side-by-side full-screen content in simulated 3D.

The SpatialLabs Go application lets you experience all your 2D content in 3D. Whether it's a photo you took for inspiration, a video call to showcase the 3D printing of your design, or even a video from Youtube, you'll enjoy a more immersive and in-depth visual experience in real-time.

Portrait/Photos



Online/Offline Videos



Video Conferencing



Casual 3D Adventurous Games



SpatialLabs Player

SpatialLabs Player

SpatialLabs Player is an out-of-box application for Side-by-side video playback and photos.

You can play 2D and 3D content as a real multimedia player, taking your contents from SpatialLabs Eyes Camera, from the WEB (HTTP Link) or as well from your PC, enjoying the best 3D experience thanks to the excellent high quality.





SPATIALLABS™ TRUEGAME

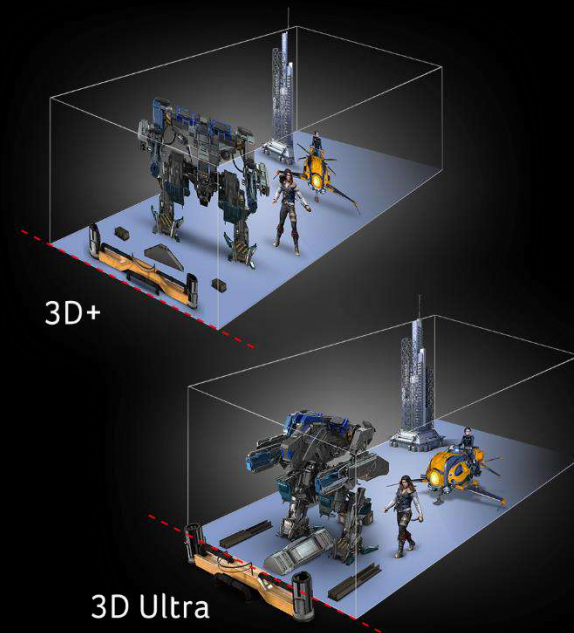
SpatialLabs TrueGame is an application that brings stereoscopic 3D to the world of gaming, letting players enjoy their favorite titles in true glory. This is possible because games are mostly created with three dimensions in mind: developers include information about depth into each scene and object they build. SpatialLabs leverages this already-existing information in order to present the games in stereoscopic 3D.

*Click [Here](#) to check the latest game list we offer.



3D+ & 3D ULTRA

3D Ultra in SpatialLabs TrueGame comparing with 3D+ offers gamers the ultimate 3D gaming experience with its enhanced stereo rendering capabilities, projecting images with depth and life-like 3D geometry.





SpatialLabs Model Viewer

SpatialLabs Model Viewer

SpatialLabs Model Viewer: A tool which enables users to import files in all major 3D file formats* and present them in stereoscopic 3D. While in the model viewer, information generated about head-position is incorporated into the displayed 3D model. For example, moving slightly to the left or right will rotate the 3D model in the opposite direction, as if a user had taken a step to either side of the object. All of this happens in real-time.

SpatialLabs Model View supports all major 3D file formats as listed in below:

Formats	Suggested Format
BLEND, OBJ, FBX, 3DS, PLY, STL, glTF/glb, DAE, IGES, STEP, VRML/WRL, STP, IGS, GCODE/GCO	FBX
	OBJ



SpatialLabs Model Viewer For Stereoscopic 3D Visualization

Real-time rendering technologies for interactive visualization Supporting all major 3D file formats built for 3D software



SpatialLabs Model Viewer

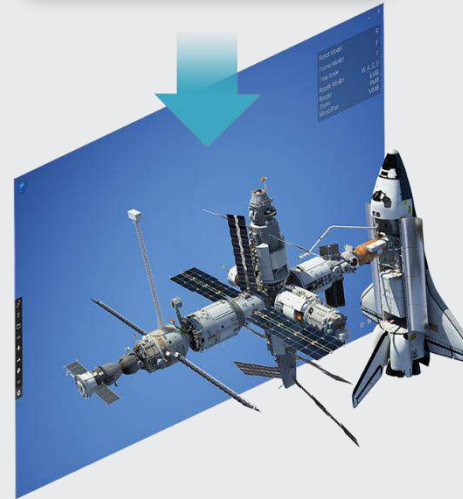
The add-on serves as a shortcut that allows you to take your 3D models from different 3D software and import them automatically to SpatialLabs Model Viewer. You don't have to launch SpatialLabs Model Viewer in advance as it will be launched automatically by just one click.

Taking Blender as an example, once the add-on is installed, you can see the shortcut tab on the right-hand side.

SpatialLabs Model Viewer Instant Preview with Add-ons



Open in Model Viewer



SpatialLabs
Model Viewer

Available only with Experience Center Pro

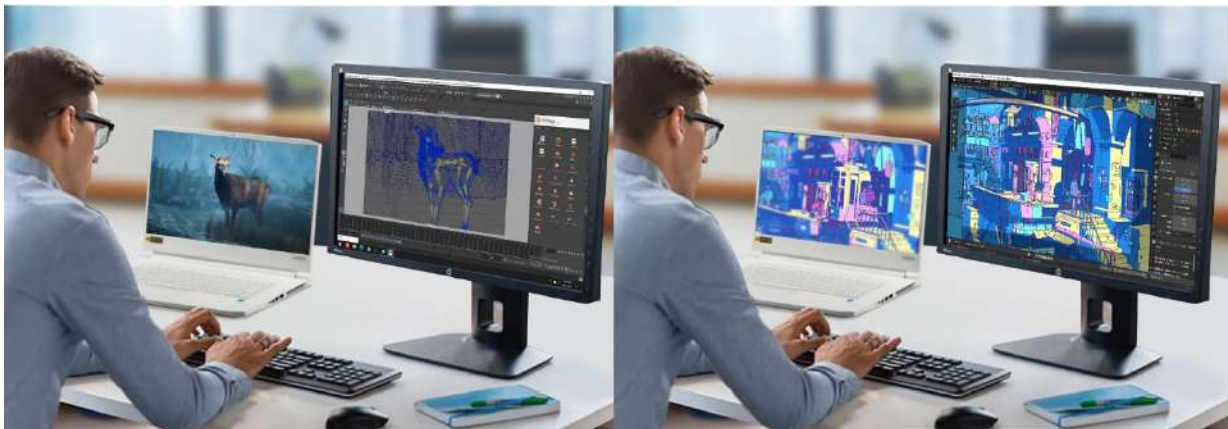
ADD-ONS

Edit in 2D, Real Time

View in 3D

SpatialLabs Go allows creators to edit projects in 3D software while being able to real-time view in Stereoscopic 3D Mode on a SpatialLabs™ product. This tool allows for optimization of workflows for 3D visualization.

With one click in Blender and Maya to set a window into side-by-side full screen view, designers can transfer content real-time into stereoscopic 3D. This gives creators the flexibility of having an additional screen on the side for editing on a 2D display, and then viewing the changes on a SpatialLabs device in real-time.



Available only with Experience Center^{Pro}

Unity and Unreal Engine Development



SpatialLabs™ also supports Unity and Unreal Engine through our XR Runtime, letting you develop your Unreal projects for different use cases and present them in Stereoscopic 3D.

Developers enhance experiences at locations like museums, showrooms, or educational facilities so users will be able to view and interact with the content in stereoscopic 3D for an even more immersive experience.

Experience consistent and immersive 3D visuals even in challenging lighting conditions. Our advanced technology accurately tracks eye positions in dim settings like museums, ensuring the 3D experience is always perfectly tuned to the viewer. Whether you're a creator working late, a developer in a subdued environment, or a consumer exploring 3D in various ambiances, the visuals adapt in real-time to your movements, ensuring a seamless and captivating experience every time.

Available only with Experience Center Pro

Acer OpenXR & Steam VR

Professional Applications supported by SpatialLabs via OpenXR runtime/SteamVR Bridge drivers



OpenXR is a royalty-free open standard that provides access to AR/VR platforms and devices. The Acer XR Runtime has passed conformant test and is compliant with OpenXR. Applications using OpenXR are therefore supported on Acer SpatialLabs Pro devices through AcerXR Service 1.01.2040 in SpatialLabs Experience Center Pro software.



Acer SteamVR Bridge is on top of Acer OpenXR Runtime, which enables SteamVR applications to be viewed on Acer SpatialLabs Pro devices. VR content creators and developers can now broaden their viewing options and unlock new dimensions of creativity with Acer SpatialLabs.



APPS

Acer OpenXR



APPS

*Acer SteamVR Bridge

Acer OpenXR



APPS

Acer OpenXR






APPS

*Acer SteamVR Bridge

Acer OpenXR

Why SpatialLabs is better?

DRIVING INNOVATION	GREAT EXPERIENCE	LINE-UP FOR EVERY NEEDS	DIFFERENTIATION vs ALTERNATIVE		
Wow effect	First Spatial solution to the market	Notebook, Monitor, Gaming, Edu, Professional, 15" and 27"	Glasses free solution	SpatialLabs Software	Line-up for a wider audience
			<ul style="list-style-type: none"> - no motion sickness - hygienic solution - lazy eye friendly 	<ul style="list-style-type: none"> - Videogame list updated monthly - Add-ons available for the most used 3D software 	Thanks to its strategic price position of the full portfolio

DESIGNER & DEVELOPERS



Acer SpatialLabs View Pro 27

HIGH TECH WORKERS



Acer SpatialLabs View Pro

GAMER



Predator Helios 3D 15 SL



Acer SpatialLabs View

TECH PIONEER



Acer SpatialLabs Eyes



Acer Aspire 3D



Acer SpatialLabs View

- SpatialLabs Model Viewer
- SpatialLabs Model Viewer ISV Add-ons
- SpatialLabs Unreal/Unity plug-ins
- Acer OpenXR
- Acer SteamVR bridge

- SpatialLabs TrueGame
- SpatialLabs Model Viewer Lite
- SpatialLabs Go
- SpatialLabs Player

- SpatialLabs Go
- SpatialLabs Player
- More...

Gaming Target Audience

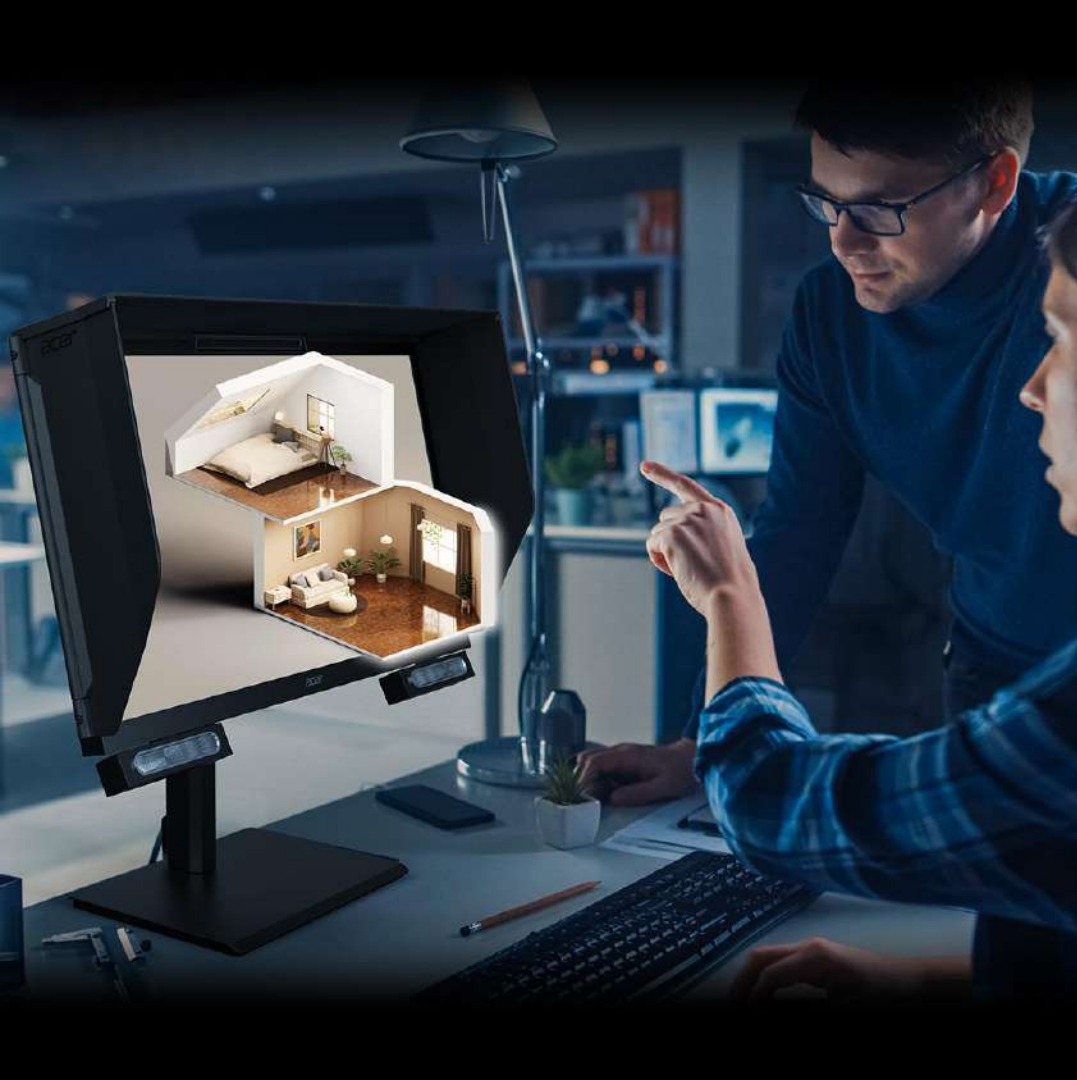
Gamers

They love exploring and adventures. They love visuals and believability. Seeking out breathtaking environments is of paramount importance.

Tech Adventures /Pioneer

They love to seek out new more sense-enchanting experiences. They are highly creative, free-thinking, adventurous, and spontaneous. They are not followers but rather independent-minded, often clever and always original.





Target Audience

SpatialLabs™ technology is revolutionary for creators who work with 3D content. Designers typically work on 2D displays that provide only limited information about the depth of a 3D object or scene. SpatialLabs™ empowers creators with the ability to see their projects come to life in real time.

- 3D Creators
- Designers
- Developers
- Engineers
- Real estate pro
- Car Industry
- Kiosk for exhibition
- Dentist
- Surgery
- Medical equipment
- Advertisement Marketing
- Museums
- Cinema and Art
- etc etc

SpatialLabs helps to grow several professional business thanks to its innovative new point of view!



THE BEST IS YET TO COME

Via del Pratellino, 14B 50131 Firenze - Partita Iva: 04902300484
Per info PEC: 2fmultimedia@pec.it e-mail: info@2fmultimedia.it - Telefono: 055 74 77 821